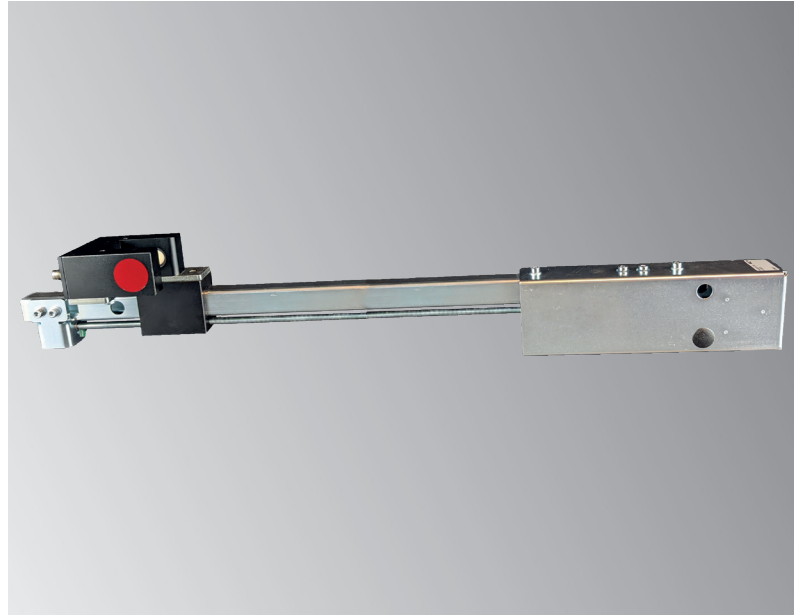


FMS Web Guiding / Accessories

BKS.TA-Series Motorized sensor positioning for BKS700-series

- **Remote-controlled sensor adjustment**
Allows precise sensor adjustment also in inaccessible places
- **Easy system integration**
Ethernet interface
- **Edge guiding left or right**
Universally adaptable
- **Different strokes**
Positioning accross the entire web width
Adaptable to all steering frame widths



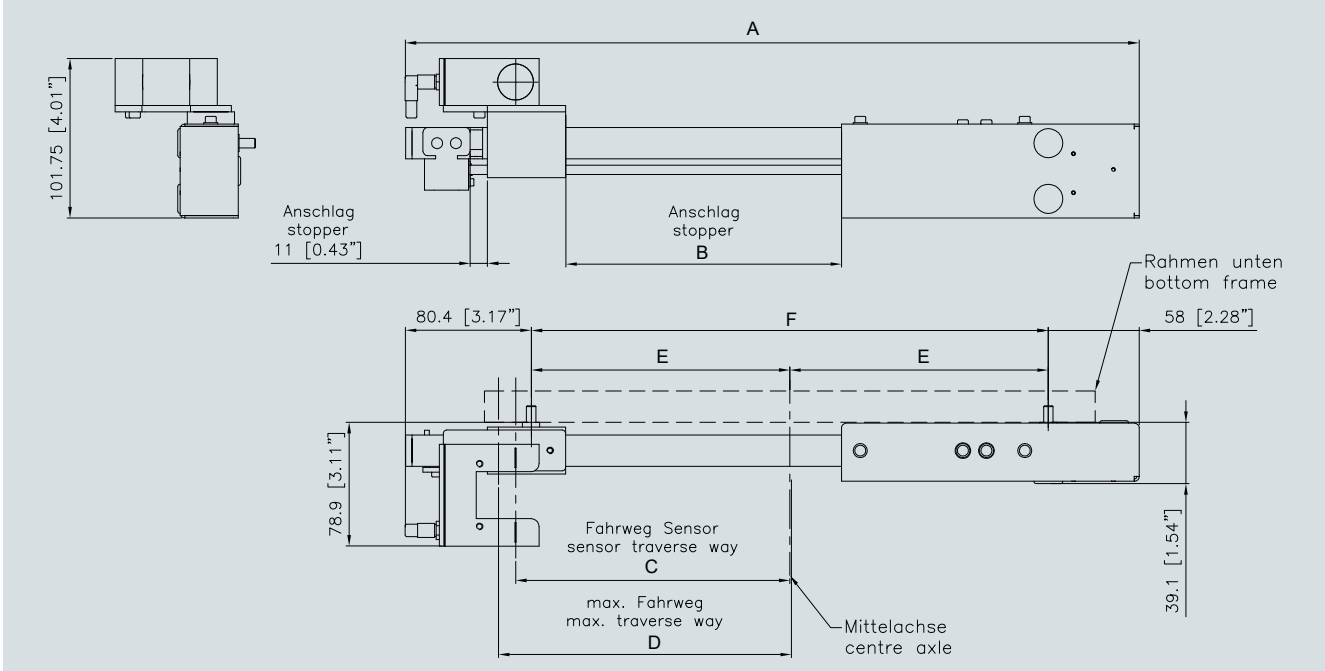
BKS.TA-series

BKS.TA- series of motorized traverses for precise positioning of material sensors for web guiding. The traverse can be used with all steering frames and actuators from the FMS portfolio in combination with the web guide controller of the BKS700-series. The simple installation concept and compact dimensions make the traverse perfect for new machines or retrofit projects. FMS traverses operate hygienically clean and can be used in the food, pharmaceutical and packaging industries.

Functional description

The FMS traverse uses a combination of stepper motor and backlash-free threaded spindle, which allows very precise sensor positioning. The BKS.TA traverses with the BKS700 web guide controller control a single edge sensor. Sophisticated functions such as reference run, free run or an automatic sensor recognition make operation simple and intuitive.

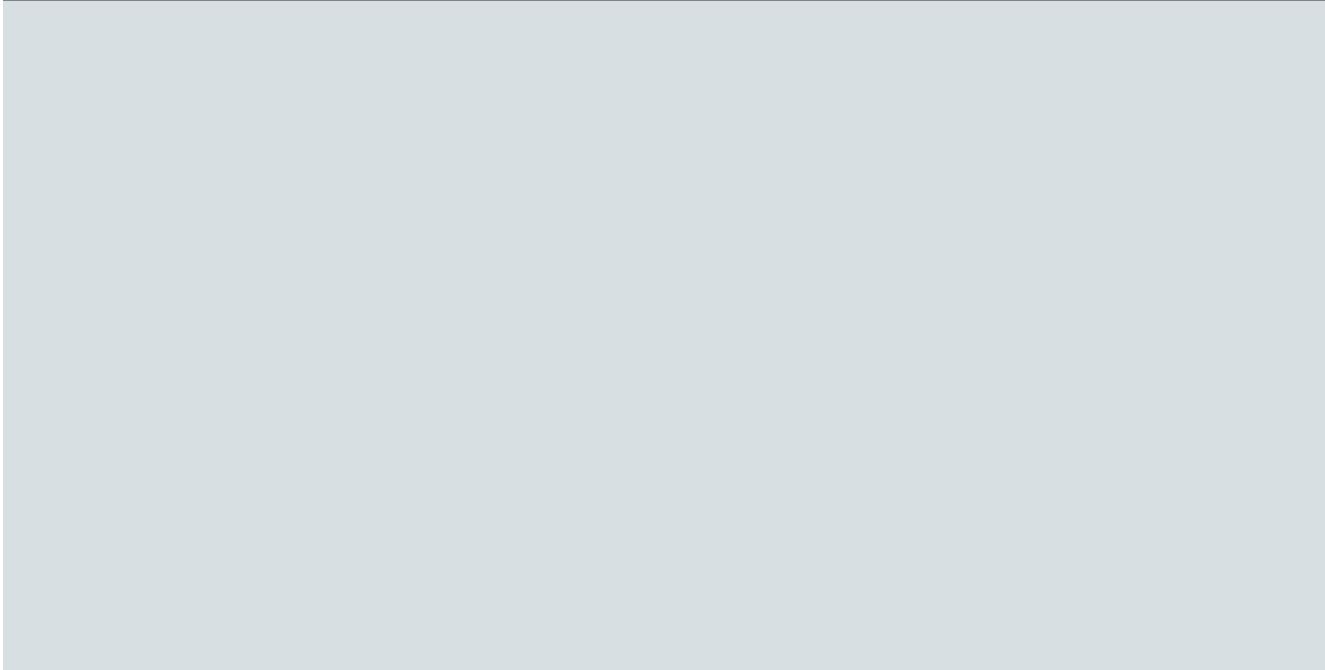
BKS.TA-Series : Dimensions with ultrasonic sensor US01 or optical sensor AZS01



BKS.TA-series : Dimensions with ultrasonic sensor US01 or optical sensor AZS01

Stroke mm (in.)	A mm (in.)	B mm (in.)	C mm (in.)	D mm (in.)	E mm (in.)	F mm (in.)
200						
400						
600						

BKS.TA-Series : Dimensions with ultrasonic sensor US04 or optical sensor AZS04



BKS.TA-series : Dimensions with ultrasonic sensor US04 or optical sensor AZS04

Stroke mm (in.)	A mm (in.)	B mm (in.)	C mm (in.)	D mm (in.)	E mm (in.)	F mm (in.)
200						
400						
600						

BKS.TA-series : Technical Data	
Material	galvanized steel
Weight	2.50 kg (5.51 lbs)
Electrical connection	Control and power supply via web guide controller BKS700
Drive	Stepper motor 24V with backlash-free spindle
Installation options	To given installation points on any FMS steering frame or freely positionable on rewinder or winders in combination with FMS actuators of the BKS.D-series.
Adjusting speed	20 mm/ Sek
Temperature range	0 to 50 °C
Protection class	IP40

BKS.TA-series : Order Code	
BKS	Other options, special designs
.TA	Size of edge sensor (US 01 , US04, AZS 01 , AZS04)
.400	For edge guiding R ight-hand side
.R	Maximum Stroke in mm
.01	Series Motorized Sensor Adjustment
.XXX	Solution Web Guiding

BKS.TA-series : Scope of Delivery	
● Motorized traverse (pre-installed to steering frame)	● Connecting cable (to web guide controller BKS700)

BKS.TA-Series : Typical application



Other products : Tension Control



Über uns

FMS Force Measuring Systems AG is the market leader in the field of web tension measurement, control and specialist for web guiding solutions. For the wire industry we are the only manufacturer offering a complete range of technologies for force measurement, data processing and radio transmission of signals.

Our in house developed products are used in the manufacturing industry, converting, metals, paper, textiles, as well as in cable and wire rope production. Utilising the latest technology, high quality components and a firm understanding of customer applications, FMS supports customers worldwide in the effort to maximize the productivity of their machines. Since 1993, our highly qualified employees have been creating high-end solutions for machine builders and plant operators. As an owner-managed company, we pride ourselves on being personal and approachable with the ability to make decisive moves fast.

World Headquarters: FMS Force Measuring Systems AG

Aspstrasse 6 • 8154 Oberglatt (Switzerland) • Phone + 41 44 852 80 80 • Fax + 41 44 850 60 06
 info@fms-technology.com • www.fms-technology.com